

PARTS LIST			
ITEM	QTY.	DESCRIPTION	SPECIFICATION
①	1	BODY, THREADED or SOCKET ENDS	A351 CF3M
②	1	COVER	A351 CF8M
③	1	DISC	A351 CF8M
④	1	DISC NUT	A194 GR. 8M
⑤	1	DISC ARM	A351 CF8M
⑥	1	DISC NUT LOCK PIN	A276 316
⑦	1	HINGE PIN	A276 316
* ⑧	1	GASKET	TEFLON/GRAFOIL
⑨		COVER BOLT	A320 GR. B8
⑩		COVER BOLT NUT	A194 GR. 8
⑪	1	IDENTIFICATION PLATE	A240 304

**SPECIFICATIONS**

DESIGN STANDARD: ASME B16.34  
 END CONNECTIONS: ANSI B1.20.1 (THREADED)  
 ASME B16.11 (SOCKET WELD)

\* RECOMMENDED SPARE PARTS

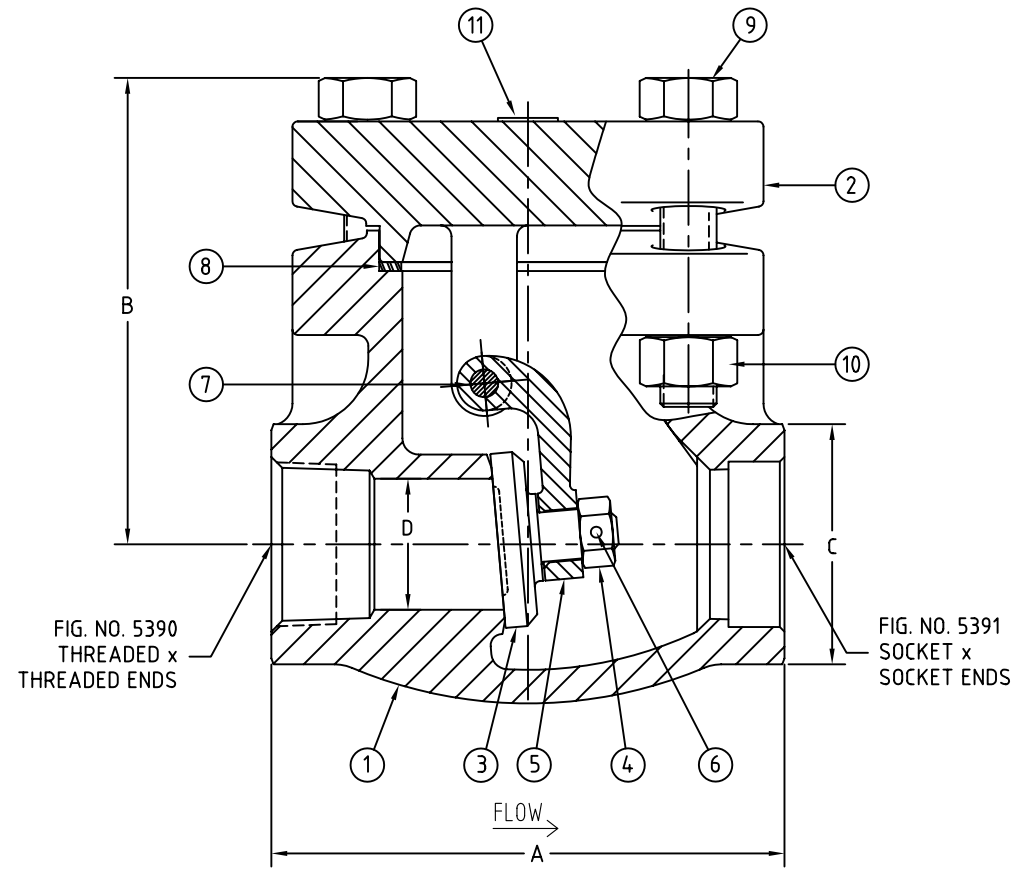


FIG. NO. 5390  
THREADED x  
THREADED ENDS

FIG. NO. 5391  
SOCKET x  
SOCKET ENDS

UNITS: INCHES

SIZE	A END TO END	B CENTER TO TOP	C HEX	D	WEIGHT (LBS)	Cv
1/2"	3.625"	3.250"	1.750"	.500"	7	6
3/4"	3.625"	3.250"	1.750"	.750"	7	14
1"	4.000"	3.500"	2.000"	1.000"	9	27
1 1/2"	5.875"	5.500"	2.875"	1.500"	28	60
2"	6.250"	6.250"	3.250"	2.000"	30	118

LADISH FIGURE NUMBER FOR THREADED ENDS	
5390-0718-XX	CF3M BODY TEFLON GASKET
5390-2118-XX	CF3M BODY GRAPHITE GASKET
LADISH FIGURE NUMBER FOR SOCKET ENDS	
5391-0718-XX	CF3M BODY TEFLON GASKET
5391-2118-XX	CF3M BODY GRAPHITE GASKET

**LADISH VALVE**

**ASSEMBLY - THREADED or SOCKET ENDS**  
**300# BOLTED COVER CRYOGENIC SWING CHECK VALVE**

SCALE NONE		DRAWING NO. LD5390/5391 CF3M	
DRAWN BY CL	CHK'D BY BK	APPROVED BD	DATE 7/19/2011